

The logo for Drift Masters, featuring the word "Drift" in a large, white, sans-serif font with a registered trademark symbol, and "MASTERS" in a smaller, white, sans-serif font below it. A yellow swoosh underline is positioned under "MASTERS".

Drift[®]
MASTERS

The title "Drift Masters" in a white, italicized, sans-serif font, set against a background of a blurred drift car race.

Drift Masters

The subtitle "Round 2" in a bold, yellow, sans-serif font, set against a background of a blurred drift car race.

Round 2

The location and event name "CIRCUITO DE MADRID JARAMA - RACE Spain" in a bold, yellow, sans-serif font, set against a background of a blurred drift car race.

**CIRCUITO DE MADRID
JARAMA - RACE Spain**

DM.GP DRIFT MASTERS 2026 DM.GP
16TH & 17TH
MAY 2026

Drift
MASTERS

Jarama
RACE

ROUND 2

SPAIN

CIRCUITO DE MADRID JARAMA - RACE



FOR TICKETS & EVENT INFO SEE WWW.DM.GP

POWERED BY



IN PARTNERSHIP WITH



Drift
MASTERS



Drift[®]
MASTERS

QUALIFYING
BRIEFING

SCORING SYSTEM

- Judge 1 : 60p Line
- Judge 2 : 60p Line + 5p Commitment
- Judge 3 : 20p Angle + 5p Initiation + 10p Fluidity
- Each judge may use half points when scoring e.g. 47.5 points out of a possible 60.
- Both line judges evaluate the entire track; the final result is the average of their two scores.
- The scores for Commitment, Angle, Fluidity, and Initiation will be added together.



Drift
MASTERS

OZ9

Finish Line

IZ8

OZ7

OZ6

IZ5

OZ3

OZ4

TG1

IZ2

Start of Scoring Zone

Start Line



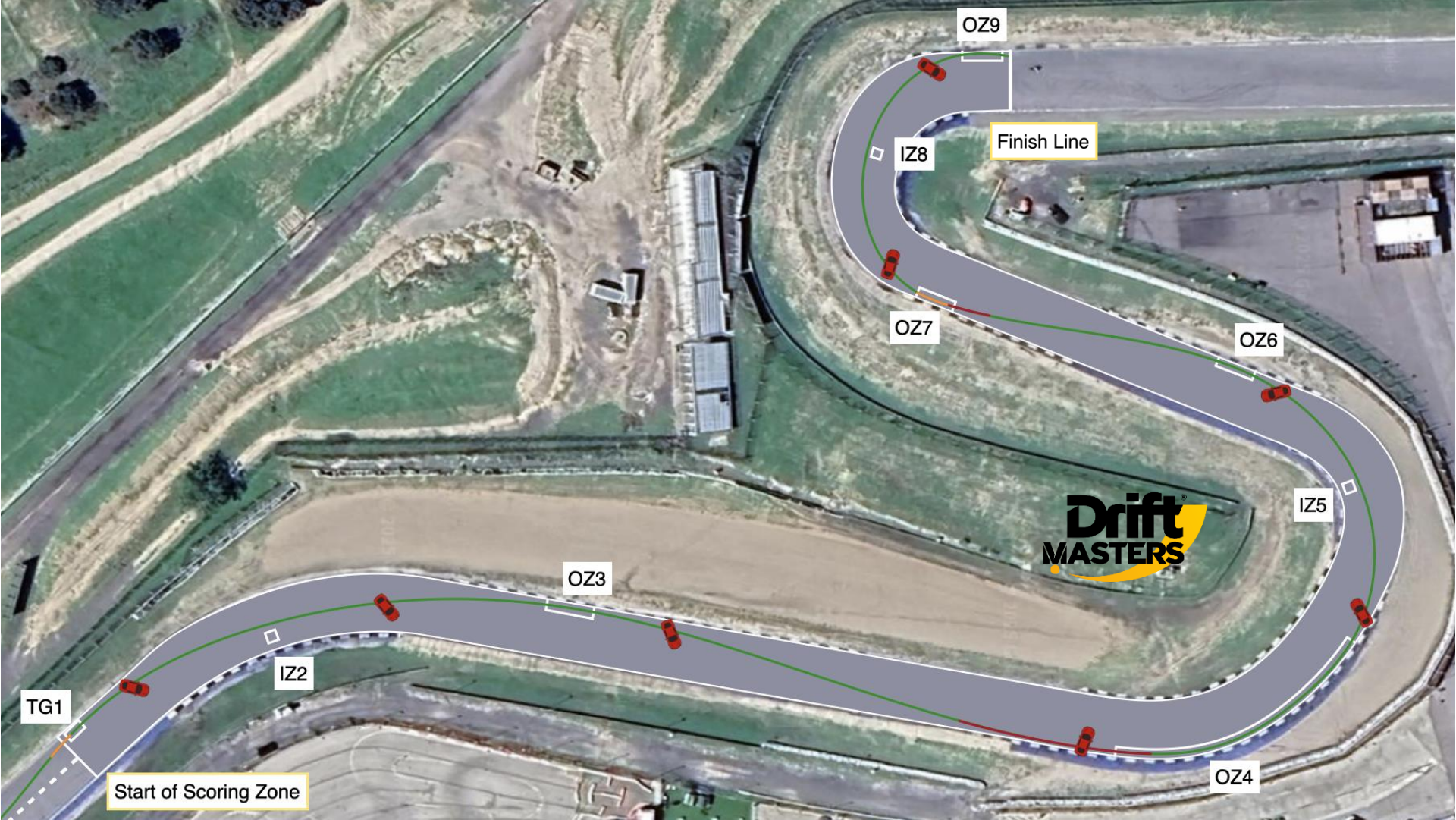
DRIFTING INITIATION

- ✓ During qualifying the vehicle must be sideways, as it passes the single standing cone placed trackside.



INITIATION IS OPEN:

- ✓ Handbrake
- ✓ Clutch kick
- ✓ Weight transfer
- ✓ (Weight transfer/ Clutch kick scores higher)



OZ9

Finish Line

IZ8

OZ6

OZ7

IZ5

**Drift
MASTERS**

OZ3

IZ2

OZ4

TG1

Start of Scoring Zone

Acceleration/ Deceleration/ Orange zone:

Green zone: Vehicle must be accelerating or at very least maintaining speed.

Orange zone: Vehicle may be on partial throttle or minor speed adjustment in these zones, but may not be heavily using the handbrake or footbrake

Red zone: Vehicle may decelerate in this zone using handbrake, footbrake or excessive off throttle and the chase driver must anticipate slowing in these zones



TG1

IZ2

OZ3

OZ7

OZ9

IZ8

Finish Line

OZ6

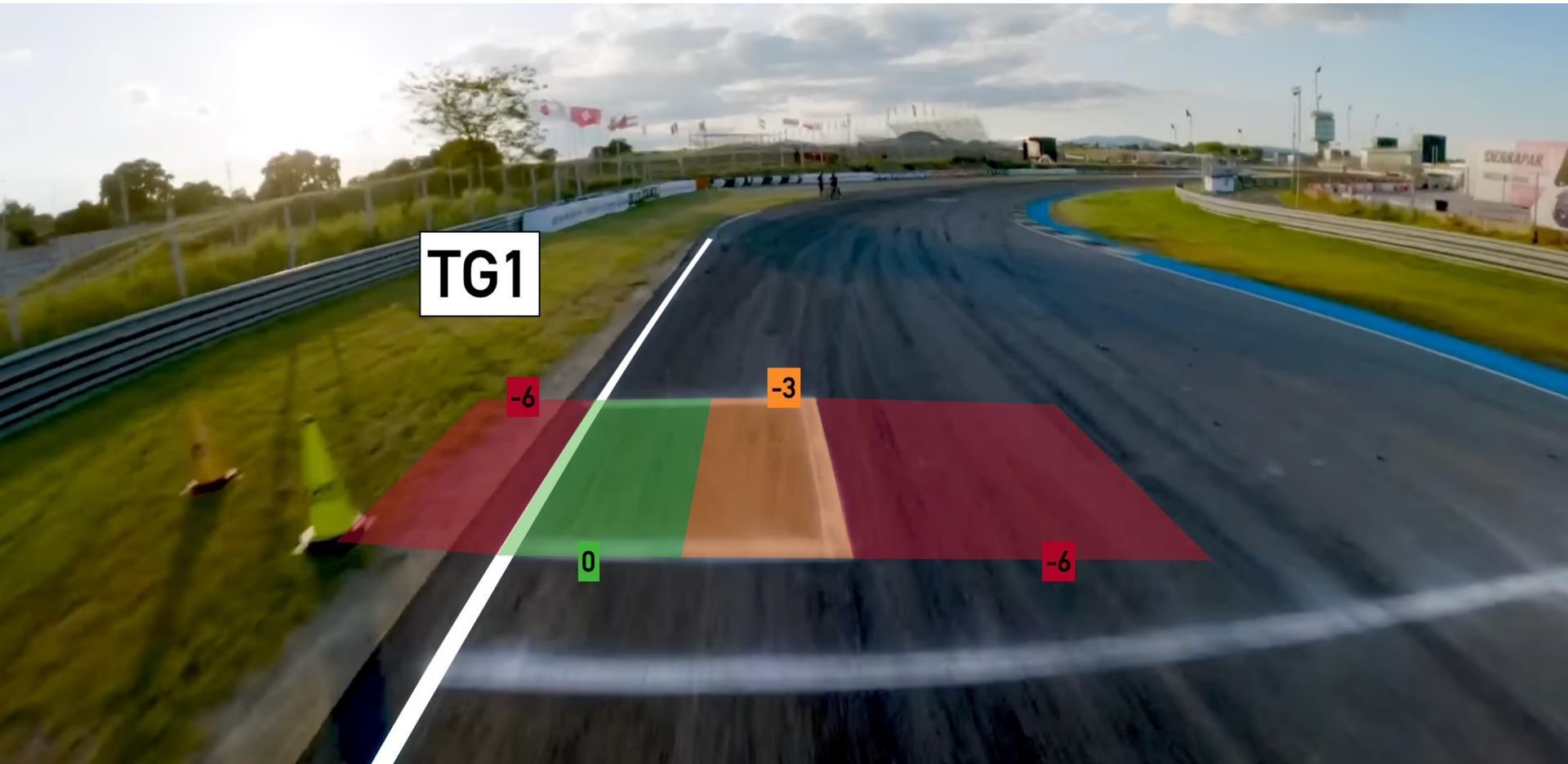
IZ5

OZ4

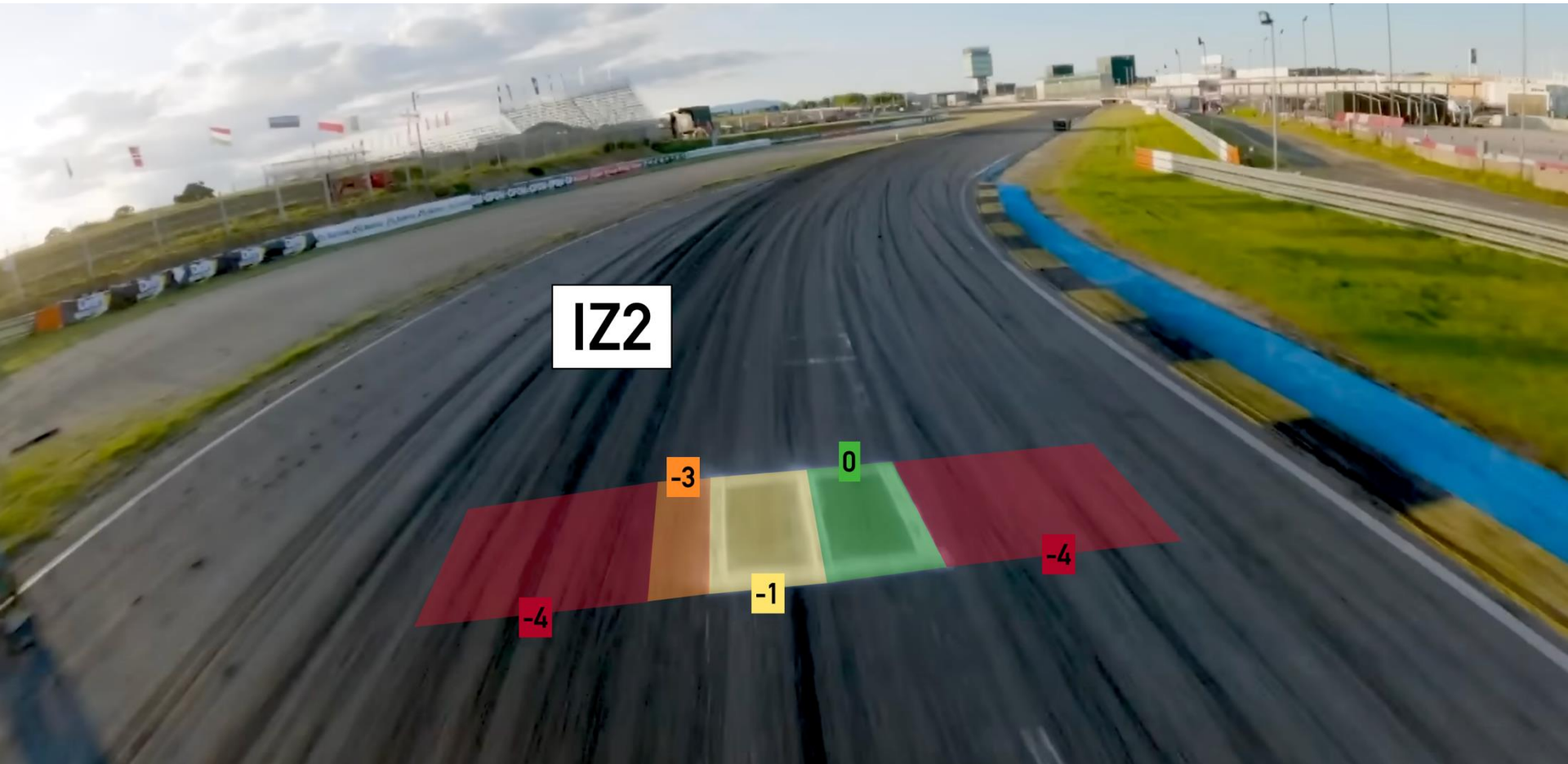
**Drift
MASTERS**

Start of Scoring Zone

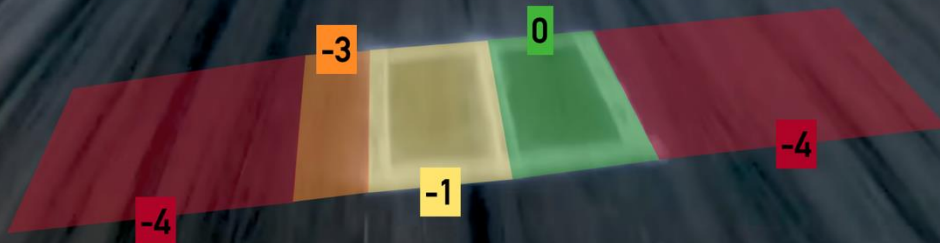
Deductions for missing zones



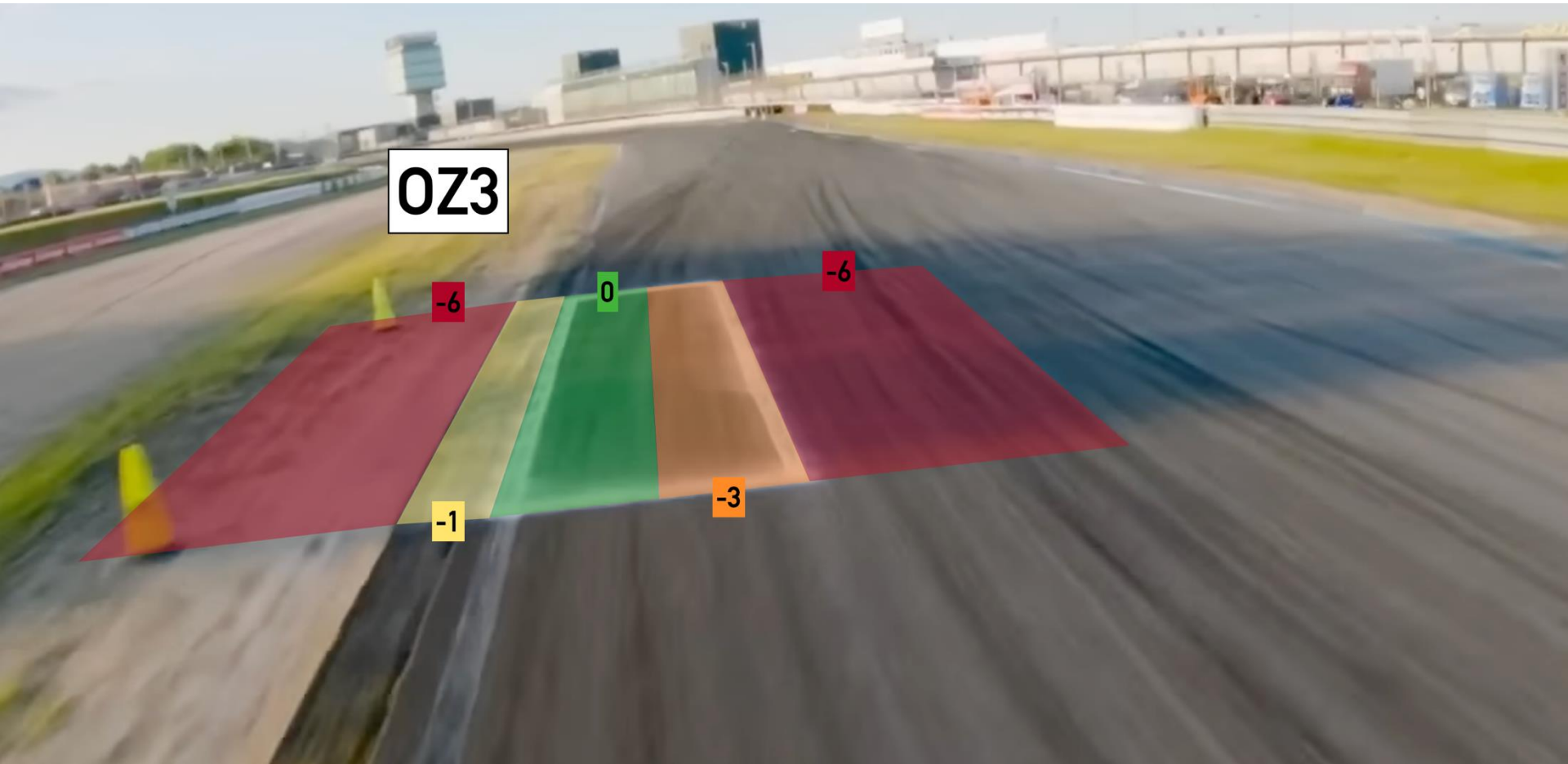
Deductions for missing zones



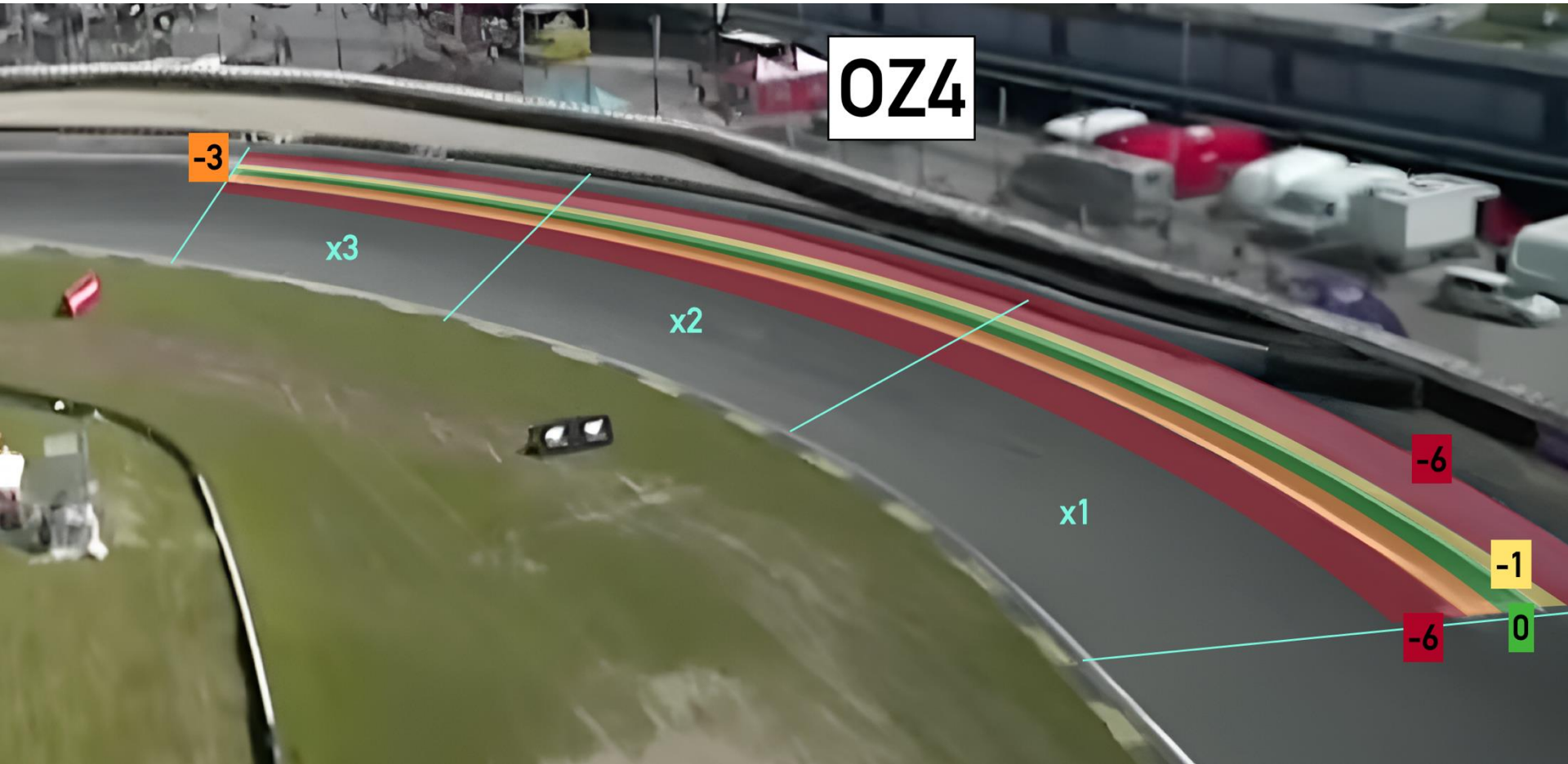
1Z2



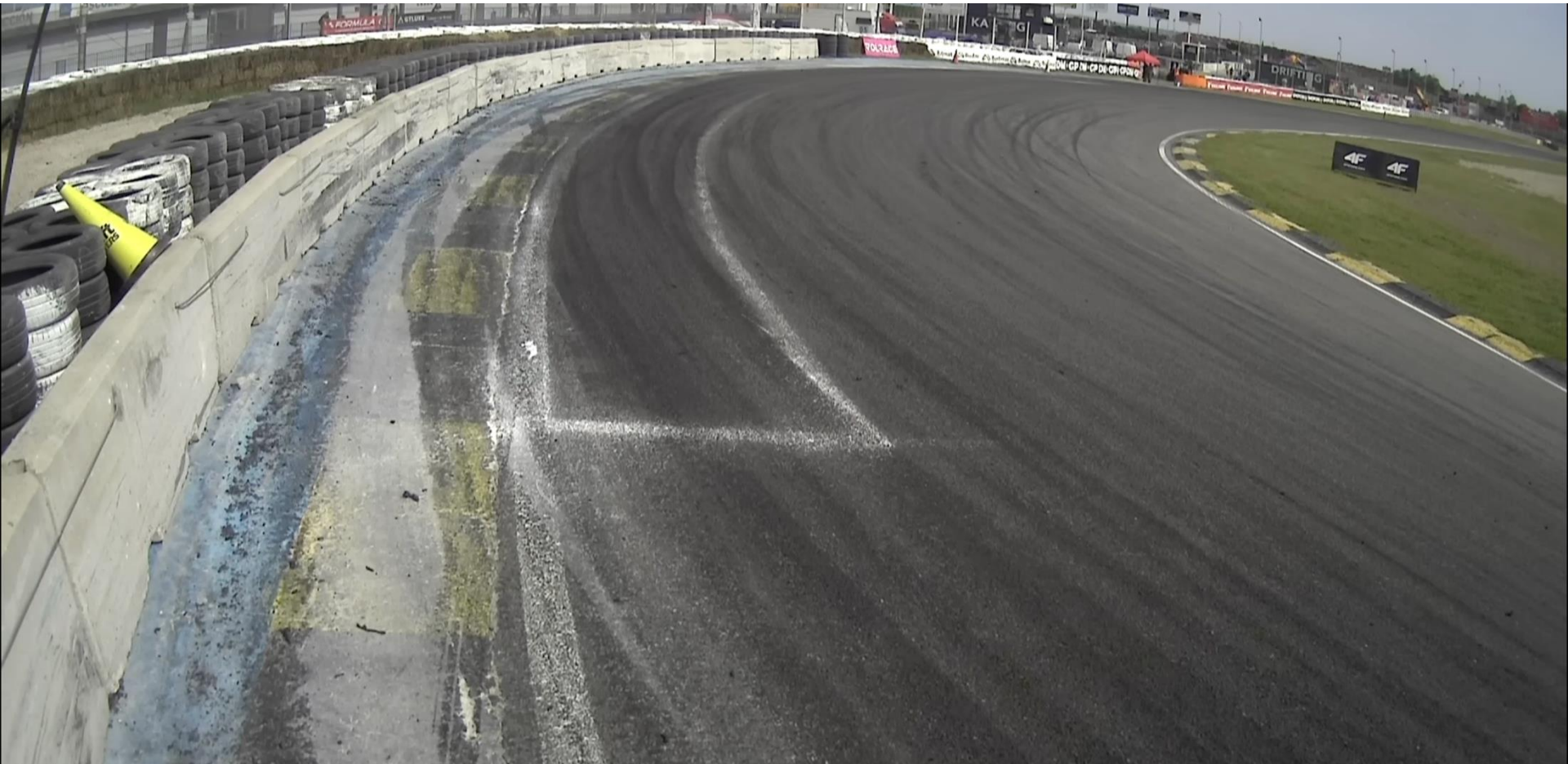
Deductions for missing zones



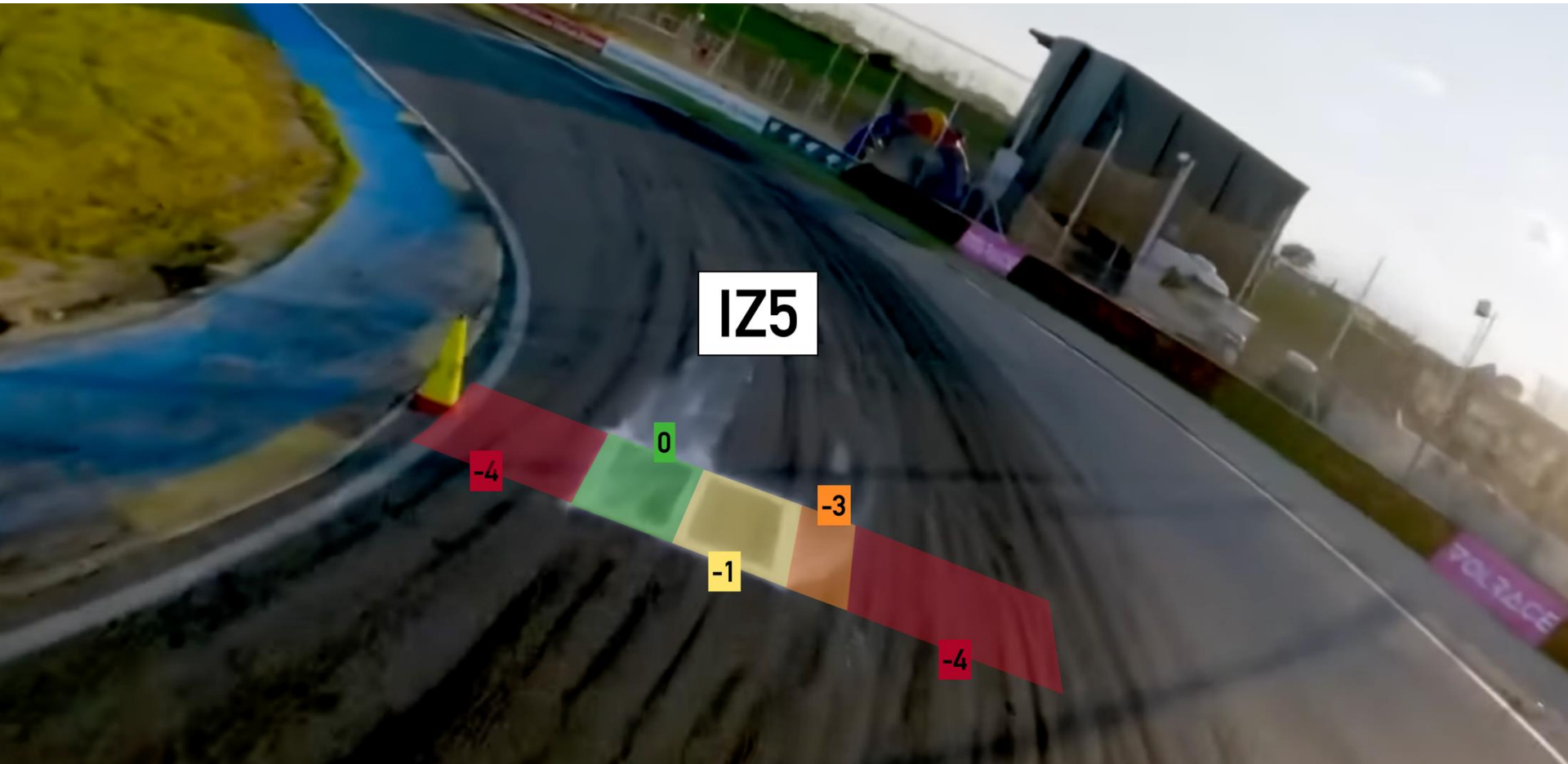
Deductions for missing zones



Surface difference at OZ4



Deductions for missing zones



IZ5

-4

0

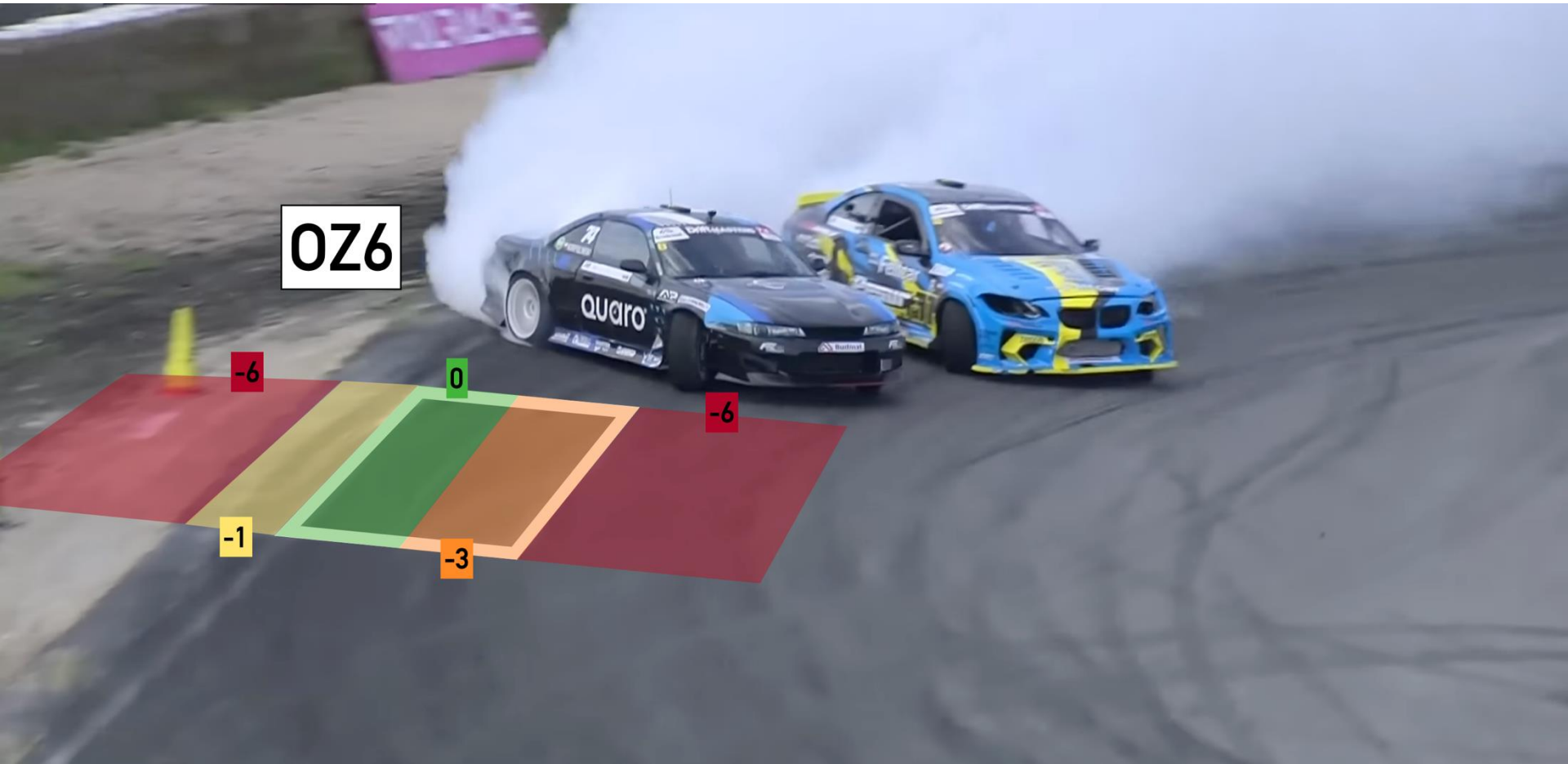
-1

-3

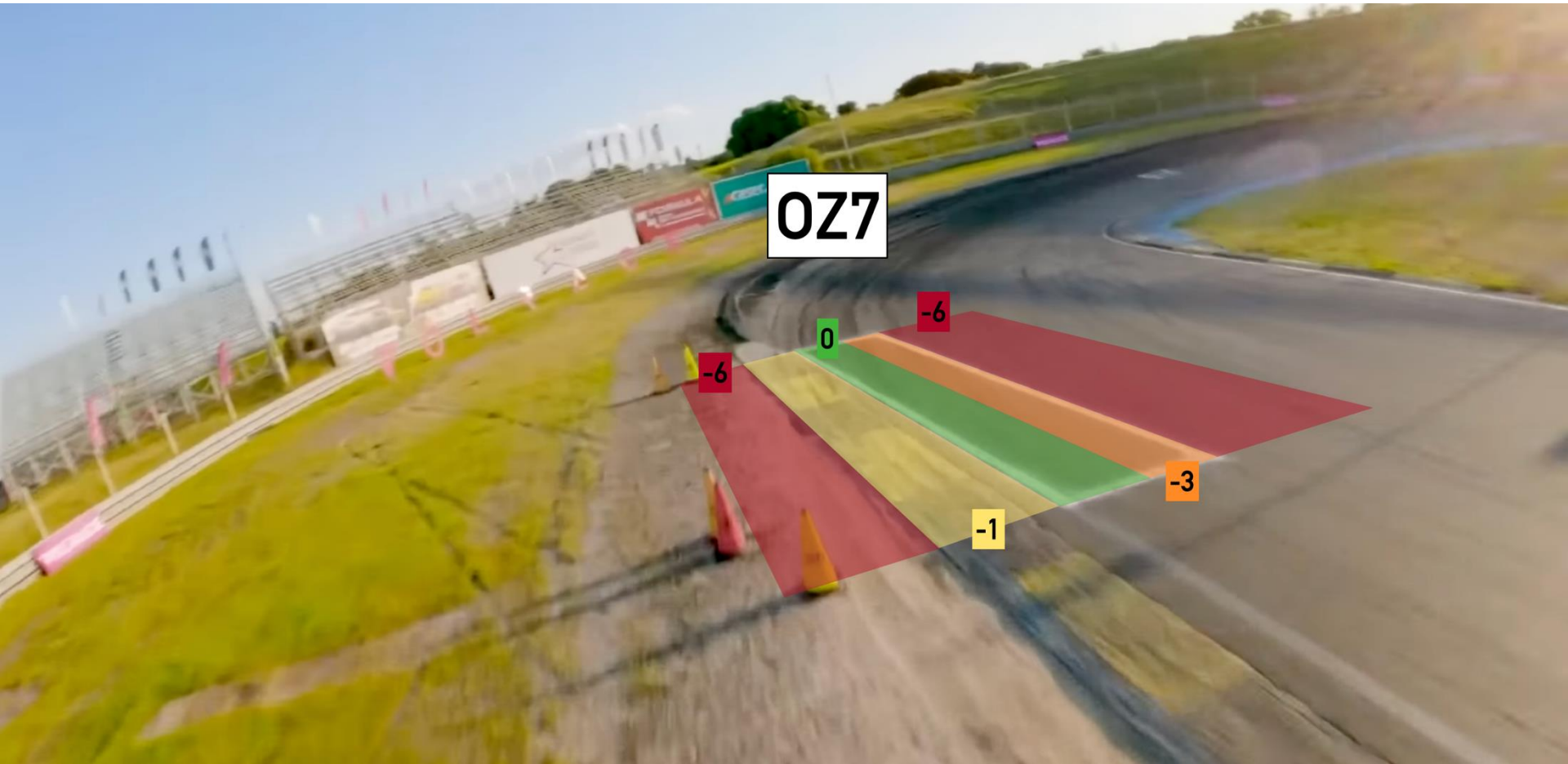
-4

POLYFACE

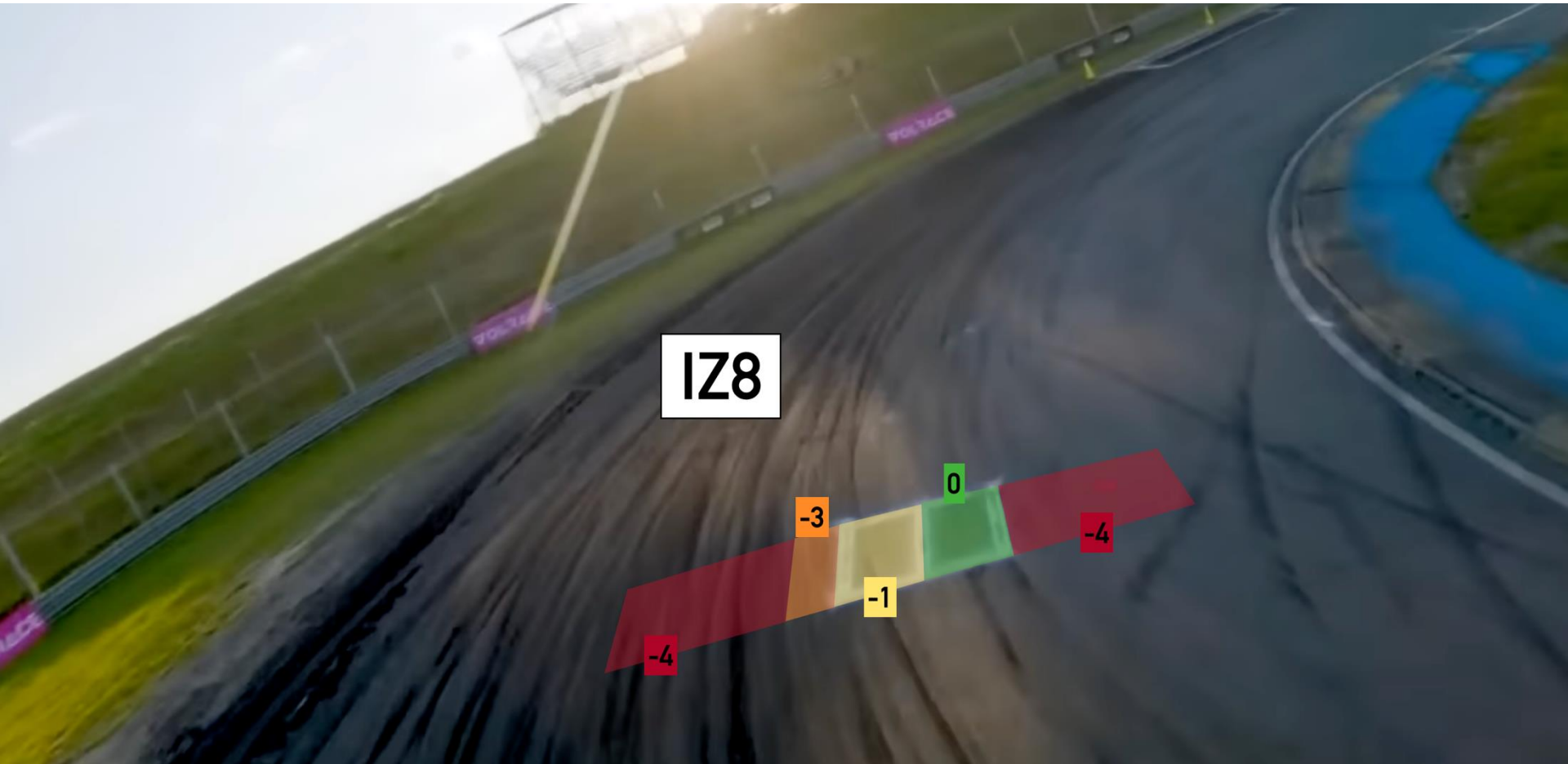
Deductions for missing zones



Deductions for missing zones



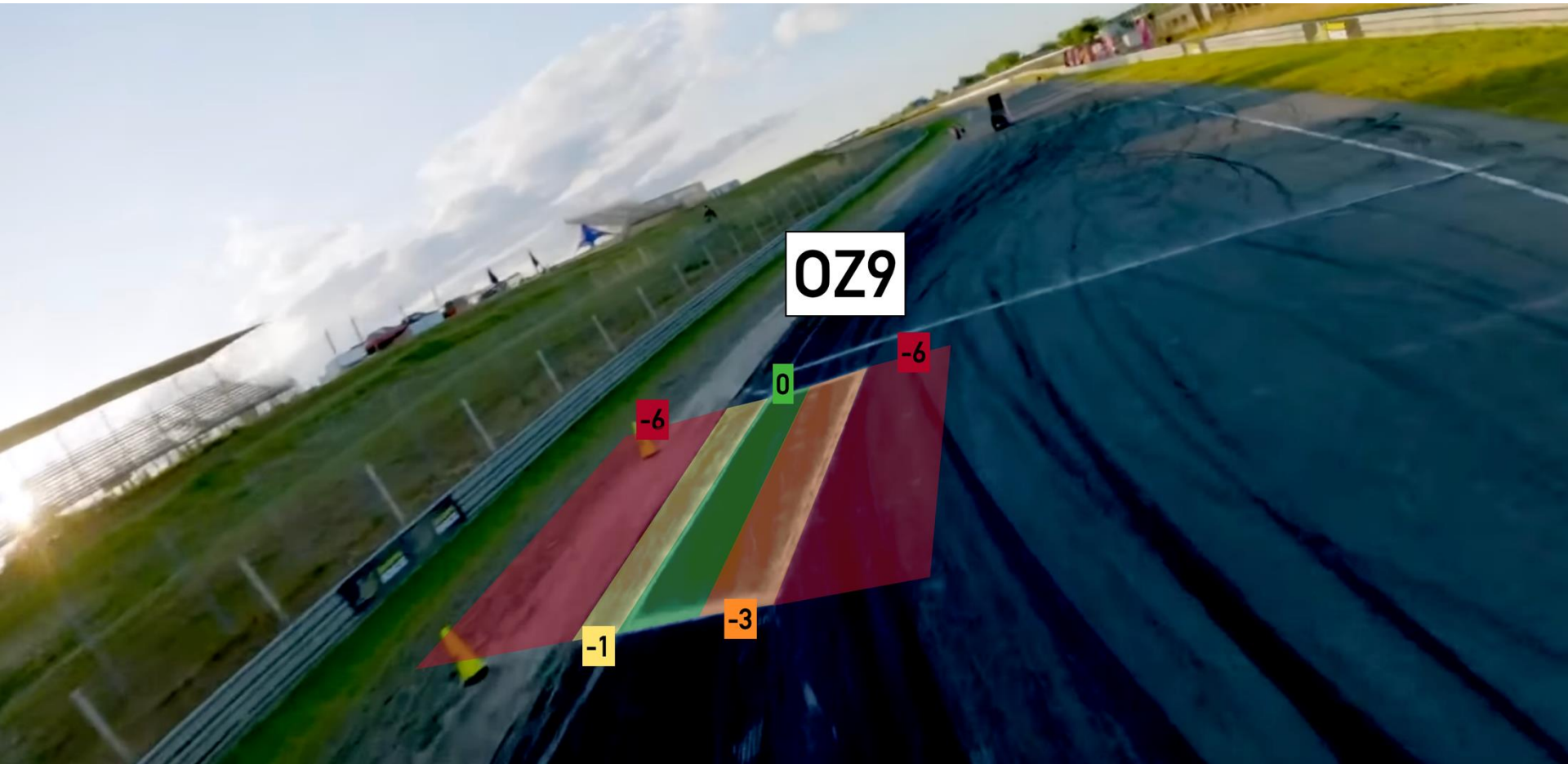
Deductions for missing zones



1Z8



Deductions for missing zones



LINE 60%



- ✓ Initiate on the Left side of the track
- ✓ Get left rear wheel in area of TG1
- ✓ Front right wheel into IZ2 and continue to OZ3
- ✓ Decelerate after transition and fill OZ4, stay wide after OZ4, before getting to IZ5
- ✓ Front left wheel into IZ5 and continue to OZ6
- ✓ Get to OZ6 using smooth arc
- ✓ Decelerate after transition to OZ7 and then continue to IZ8
- ✓ Front right wheel into IZ8 and continue to OZ9, keeping smooth arc

ANGLE 20%



- ✓ Consistent angle from TG1, through IZ2, to OZ3
- ✓ Smooth transition from OZ3 to OZ4
- ✓ Deceleration by increased angle after transition is finished before OZ4
- ✓ Consistent angle from end of deceleration zone through OZ4, IZ5 to OZ6
- ✓ Snappy transition from OZ6 to OZ7
- ✓ Consistent angle through OZ7, IZ8 to OZ9
- ✓ Consistent angle through finish line

- ✓ In both deceleration zones speed adjustment possible only after transition is finished

STYLE 20%



✓ **INITIATION= 5%**

- ✓ Early – Initiation cones will be used for reference
- ✓ Rate to angle - Quickly getting to the desired angle
- ✓ Smooth – no corrections
- ✓ Speed

✓ **FLUIDITY = 10%**

- ✓ Smooth transitions
- ✓ Lock to lock angle
- ✓ Car is settled and flows through the course
- ✓ Throttle application
- ✓ Accuracy

✓ **COMMITMENT = 5%**

- ✓ Aggressive on throttle to initiation
- ✓ Consistent throttle application
- ✓ Approaching outer track edges with confidence
- ✓ Maintaining proper pace throughout the course as per the Decel map

Points Deductions:

- Double initiation
- Tire off course
- Missing zones and clips
- Short Straightening (correction)
- Off line
- Lack of Angle

Zero score:

If a driver does any of the following mistakes in a qualifying run, the driver will not receive a score for that run.

- Spinning Out
- Opposite drift - Drifting with the opposite angle required at that point on course
- Hood and/or doors opening during a run
- Stop drifting
- Three wheels off
- Unchasable Run – Run which contains errors too large to chase



Drift[®]
MASTERS

BATTLE
BRIEFING

DM 2026 TANDEM JUDGING CRITERIA

- Lead runs will account for 10 points per judge for the battle score, and chase runs will account for 9 points per judge for the battle score.
- Scores are not shown during the livestream, only accesible upon request
- A driver is less likely to have a good chase run, if the lead run is not well performed.
- An example of how this scoring system will work is as follows:

	Lead Score (Maximum 30)	Chase Score (Maximum 27)	Total (Maximum 57)
Driver A	28	25	53
Driver B	24	26	50

In the above scenario Driver A would win the battle and proceed to the next phase of the competition.



Start Line

TG1

Start of Scoring Zone

IZ2

OZ3

OZ4

IZ5

OZ6

OZ7

IZ8

OZ9

Finish Line

Drift
MASTERS



OZ9

Finish Line

IZ8

OZ7

OZ6

IZ5

Drift
MASTERS

OZ3

IZ2

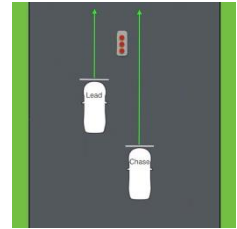
TG1

Start of Scoring Zone

OZ4

START LINE & INITIATION

- ✓ The Lead should accelerate in the lefthand lane,
- ✓ the chase car may accelerate staying in the righthand lane.
- ✓ The chase car may be slightly ahead of the lead after the start line but must be behind the lead before start of scoring zone
- ✓ Cars should accelerate all the way to the initiation point
- ✓ Penalty's will be applied to any lead driver that slows or lifts before initiation
- ✓ This also includes handbraking in the incorrect direction to the corner
- ✓ The chaser is allowed to start from a position further back than the leader, with a designated line marking the maximum permitted distance.



Starting Line Order System

- The **higher qualifier now has the option to choose** whether to lead or chase in the first run. This decision is made **before the start line**, just after tire warm-up, before the battle begins.
- **◆ Higher qualifier chooses to lead or chase**
- **◆ Choice is made before the start line**
- **◆ Lower qualifier takes the remaining position**

- ✓ The TANDEM INITIATION PROCEDURE for this round is recommended **single file**
- ✓ The lead driver may use a “flick” to initiate, lead driver can use full width of the track, but can't lose momentum thanks to that (recommended to use only 2/3 of the track).
- ✓ Both vehicles must be sideways as they pass the single standing cone in the “3, 2, 1” cone sequence placed trackside.
- ✓ The lead car must leave when the start light turns green.
 - ✓ If the lead car leaves early (before green light) they will receive a strike.
 - ✓ If the lead car leaves late (1s) they will receive a strike.
 - ✓ No chicane. (False starts are monitored using a photocell system at the start line.)
- ✓ Battles are scored by comparing assessing lead runs and chase runs by point system.



Acceleration/ Deceleration/ Orange zone:

Green zone: Vehicle must be accelerating or at very least maintaining speed.

Orange zone: Vehicle may be on partial throttle or minor speed adjustment in these zones, but may not be heavily using the handbrake or footbrake

Red zone: Vehicle may decelerate in this zone using handbrake, footbrake or excessive off throttle and the chase driver must anticipate slowing in these zones



LEAD DRIVER GOALS:

- ✓ Run the qualifying line
- ✓ Run as close se possible to 100 point qualifying run
- ✓ Run a chaseable lead run
- ✓ Follow the Accel/Decel map

CHASE DRIVER GOALS:

- ✓ Initiate no later than the lead driver
- ✓ Maintain close proximity to the lead driver with as much duration as possible
- ✓ Match or better the lead drivers angle
- ✓ Mimic the lead driver's transitions and line throughout the course

OVERTAKING

- ✓ Overtaking is allowed but:
 - ✓ The lead driver must be offline or completely off course
 - ✓ The chase driver must carry sufficient angle and on the qualifying line.
 - ✓ The chase driver becomes the lead driver once the chase vehicle has fully surpassed the lead driver's vehicle.

- ✓ Upon completion of a properly performed legal pass, the chase driver will become the lead driver and must complete the run according to the judging criteria. Once the run is completed the vehicle that was passed will receive a ZERO on that run.

CONTACT



Drifting is a non contact sport, and contact may result in penalties. A light rub is allowed but penalties may be applied for heavier contact, or contact that effects the lead cars line.

LEAD VEHICLE

- ✓ If the lead vehicle loses drift, goes off line or unnecessarily reduces speed too drastically in tandem and the chase vehicle hits the lead vehicle, the lead vehicle may be deemed at fault for the collision. Each judge will ascertain fault.

CHASE VEHICLE

- ✓ If a Chase driver has a collision with a lead driver who is fulfilling the lead driver goals then he will be deemed at fault.
- ✓ After contact both drivers must attempt to complete the run.
- ✓ If the Judges believe the lead driver deliberately spun their car after contact or stopped drifting, then they may apply penalties to that driver also.

DAMAGE DUE TO COLLISION

- ✓ Once a collision has occurred, the Judges will ascertain fault.
- ✓ In some cases, damage sustained to the vehicles may require time to repair. Only the vehicle not at fault may request up to 10 minutes to repair their vehicle.
- ✓ Judges may grant 10 minutes for repairs if a driver was properly fulfilling their role in the battle and sustained damage as a direct result of a significant mistake by their opponent.

INCOMPLETE RUN:

The following constitute an incomplete in tandem:

- ✓ Spinning Out
- ✓ Stop drifting
- ✓ Three wheels off
- ✓ A chase driver intentionally not chasing the lead driver after a zero was scored on the previous run.
- ✓ Performing an Illegal pass - results in a zero for the chase driver
- ✓ Getting legally passed- results in a zero for the lead driver
- ✓ Opposite drift- Drifting with the opposite angle required at that point on course
- ✓ Hood and/or doors opening during a run
- ✓ Collision with the other driver that is considered "avoidable" or unsportsmanlike
- ✓ Proximity box
 - ✓ (If lead car is behind finish and chase car is not behind OZ7, chase driver receives incomplete, if lead driver has fulfilled his goals)
- ✓ Unchasable Lead – A Lead run which contains errors which are too large to follow





Drift[®]
MASTERS

THANK YOU

Drift

